

# Catshill First School and Nursery



*'Pupils talk excitedly about their learning and how their teachers support them to do their best.' Ofsted 2022*

## Prospectus 2025/2026

**Kindness**

**Aspiration**

**Self-Belief**





## Welcome to Catshill First School and Nursery



Welcome to Catshill First School and Nursery. We are delighted that your child will be joining our school and look forward to seeing them reach their full potential as they grow, develop and learn. Individuals really do matter at Catshill First School and Nursery; all the staff take time to get to know the pupils, their interests and what helps them to learn.

***'Pupils are happy at Catshill First School. This is a friendly school with kindness at its heart.' Ofsted 2022***

We hope that all pupils, parents/carers, staff, governors and visitors have a happy association with the school. We want all our children to be happy and successful at Catshill First School and Nursery.

You'll find a flavour of our school in this prospectus. There is also a lot of additional information on our website, including copies of recent newsletters. If you have any further questions, please contact the school and we will do our best to answer your queries.

If you would like to arrange to visit the school or discuss your child's individual needs, please call us to make an appointment.

**Miss Julia Shingler: Headteacher of Catshill First School and Nursery and Catshill Middle School**

**Mrs Georgia Plant: Head of School**





# Catshill Learning Community

Catshill First School and Nursery is welcoming, positive and inclusive. The core purpose of the federation is to provide a nurturing community that challenges all to succeed.

We are fortunate to be federated with Catshill Middle School which provides us with excellent opportunities for effective transition as the vast majority of our pupils feed into there and the advantages for staff collaboration across both schools.

Both Catshill schools joined the SPIRE Trust on the 1st April 2024. The SPIRE Trust currently has 9 schools working within it or alongside it with the joint aim of raising standards and benefiting the children and families the schools serve.

The Spire Multi Academy Trust was established in February 2016, in order to create a trust that would seek to collaborate with other schools, share good practice and to raise attainment.



## Core Expectations

**Be Kind, Be Safe, Be Respectful, Be Ready**



# Our Curriculum

*'Leaders are ambitious in their expectations of what pupils can achieve, including those with SEND.'*  
Ofsted 2022

Learning is fun at Catshill First School and Nursery and children enjoy their learning. The children are taught from the Early Years Foundation Stage Curriculum and the National Curriculum through an exciting topic approach. This enables subjects to be grouped and for maximum engagement and motivation to be incorporated. Each topic cycle is carefully planned to ensure that all curriculum areas are covered and that the children are equipped with the skills, knowledge and understanding needed to fully meet the requirements of the curriculum. Some subjects can be blocked or taught discretely and, due to our partnership with Catshill Middle School, some subjects are taught by specialists.

Learning should be a rewarding and enjoyable experience for everyone and we encourage pupils and teachers to take the learning in a direction that builds on the interests of the child(ren). Each year group produces a curriculum map which gives further details. Parents are informed at the start of each topic of the areas that will be covered and ideas for home learning so that school and home work in partnership.





# Long Lasting Learning

Children learn from the experiences we give them. Our **Early Years Foundation Stage** pupils benefit from recently refurbished areas with engaging and attractive indoor and outdoor environments for both Nursery and Reception. We follow **The Curiosity Approach** where children's development is enhanced through creativity, open-ended real resources and opportunities to collaborate in their play-based learning.



At Catshill First School and Nursery, we have a fantastic large site with bright, welcoming classrooms and a beautiful library. Our wraparound playgrounds, Reception garden, huge field and forest fun area provide ample opportunity for taking the learning outside. We value the importance of being active and encourage our pupils to participate in a range of physical activities. The children enjoy using the trim trail, tyre walk and climbing wall. Our sports leaders from Year 4 support the younger children at playtimes and our sports coach provides expertise within our PE lessons and through after-school clubs.

**Educational Visits** enhance learning and throughout the year, events, visits and visitors provide additional opportunities for learning for the children at Catshill. Our classes all enjoy learning outside the classroom. Recent visits have included: Attwell Farm, All Things Wild, Hartlebury Castle and Museum, Wolverhampton Mosque, Birmingham Police Museum, Weston-super-Mare and Bell Boating on the canal at Droitwich. Our Year 4 children are given the opportunity to take part in a residential visit to Backwell Court where they can participate in a range of outdoor and adventurous activities.

Home Learning can be a way to 'lock in the learning' and we encourage our children to take part in home learning challenges each half term which link to their curriculum topics. We hope that parents will read at home regularly with their children to support their reading development as well as supporting them to complete other pieces of homework such as phonic work or maths skills. Some of our home learning experiences take place using online platforms such as our Rising Stars reading scheme or Times Table Rockstars.



# Our School Clubs

We offer a wide range of extra curricular opportunities which take place either during lunchtime or after school. The clubs vary depending on needs and interests. Some of the clubs held over the past few years have been:

- Girls' Football
- Boys' Football
- Multi-skills
- Gymnastics
- Ball Skills
- Summer Sports
- Recorder
- Reading
- Sewing
- Times Table
- Phonics Fun
- Christmas Crafts
- Arts & Crafts
- Choir



'The school offers a wide range of experiences for pupils, including opportunities for leadership experiences. These include being a member of the 'values council', which rewards others for showing the school's values. Pupils talk enthusiastically about trips out of school, such as a visit to Warwick Castle.'

'All pupils can take part in a performance to show parents and carers what they have learned.' Ofsted 2022



## Before and After School Care

Wraparound care is available onsite and is provided by The Kool Crew. For further details, please contact Mrs Tina Lammas on 07985 403810 (text or call) or email [thekoolcrewltd@gmail.com](mailto:thekoolcrewltd@gmail.com).

There are also childminders who drop off and pick up at Catshill First School and Nursery. Their details can be found at [www.childcare.co.uk](http://www.childcare.co.uk)





Uniform Stockists

School Days of Bromsgrove

15 Church Street,

Bromsgrove, B61 8DD

01527 757439

[www.schooldays-bromsgrove.co.uk](http://www.schooldays-bromsgrove.co.uk)

Uniform Stockists

S & H Schoolwear and Sports

1 Church Street,

Bromsgrove, B61 8DD

01527 874885

[www.sandhschoolwearandsports.co.uk](http://www.sandhschoolwearandsports.co.uk)

# Our School Uniform

## Clothing List

Top	Royal blue sweatshirt/cardigan (with or without school logo)
Shirt	White shirt/polo shirt
Skirt/Trousers	Grey/black skirt, pinafore, trousers, or shorts Blue and white gingham dress in Summer (optional)
Socks	White, grey or black socks Black or grey tights
Shoes	Plain black (made of polishable material) No trainers permitted
PE Kit	White t-shirt, black shorts, black pumps (trainers for outside), black tracksuit bottoms or leggings (outside) Year 1 to Year 4 may come to school on their PE days wearing a plain black tracksuit <b>NO BRANDED LOGOS/PATTERNS</b>
Book Bag	All children are encouraged to use a school book bag to safely carry their reading book and diary

**All uniform can be purchased at supermarkets or High Street shops. No items need to be branded with the school logo.**

If parents wish to purchased branded items, they can be purchased from School Days or S & H Schoolwear and Sports in Bromsgrove.

S&H Schoolwear and Sports also have a preloved section where uniform can be bought for a donation to Primrose Hospice.



# Food and Drinks

We encourage children to make healthy food and drink choices.

## Milk

Children under 5 in Nursery or Reception are provided with a drink of milk each day. Once children reach their 5th birthday, milk can be purchased for drinking at playtime or is available free of charge to pupils entitled to free school meals. Our school uses a scheme called Cool Milk.



## Water

In Nursery, children bring their own water bottle in daily. From Reception upwards, all children are provided with a water bottle. Pupils can then access water throughout the day keeping them refreshed and hydrated. Water is also provided at lunchtimes.



## Fruit and Playtime Snacks

Children in Nursery, Reception, Year One and Year Two are provided with a piece of fruit (or veg) each day as part of the national scheme. The fruit (or veg) choice is varied throughout the year and ranges from pears, apples and bananas to carrots, tomatoes and peas.

In Years Three and Four, children can bring in their own healthy snack to eat at playtime if they wish. We encourage snacks such as fruit, vegetable sticks, yoghurt or cheese sticks for example.

## School Meals

All children can choose meals from a balanced, varied menu provided to the school by Shire Services. The meals are currently provided free of charge for children Reception, Year One and Year Two and for older pupils who are entitled to claim free school meals. The eligibility criteria is set out below. Pupils who are not entitled to free school meals can purchase meals for £2.60 per day, £13.00 per week (May 2024). Payment must be made on a Monday morning, either by cash or cheque (payable to Shire Services) and should be sent into school in a named, sealed envelope showing your child's name, class and days for which dinner is being paid.



A typical menu is a choice from:

- Roast Chicken Fillet, Stuffing & Gravy
- Jacket potato with a selection of fillings
- Veggie sausage in Yorkshire pudding (v)
- Seasonal Medley of Vegetables
- Mashed Potatoes, Roast Potatoes
- Selection of freshly made cookies and traybakes



# Attendance and Punctuality



*'My child is so happy at school. He has really come on. I'm so proud. Thank you.'* Parent Questionnaire 2022

## The School Day

**Doors open:** 8.45am

**Registration:** 8.55am

**End of School:**

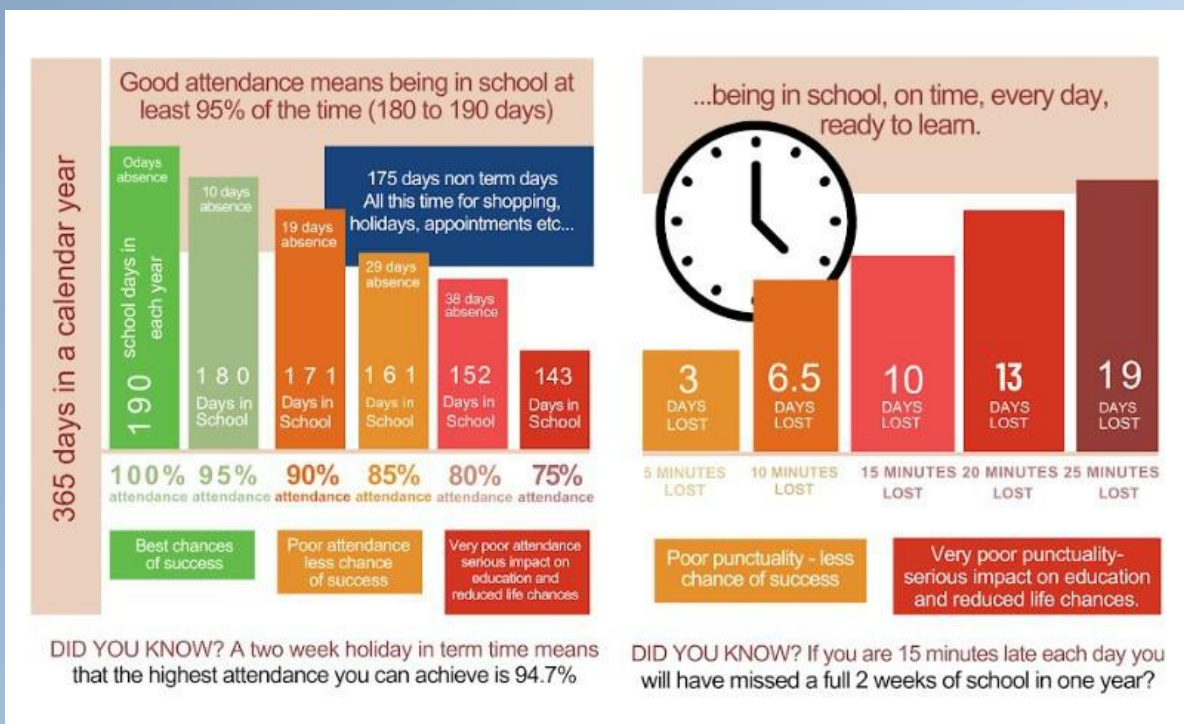
**Rec and KS1:** 3.20pm

**KS2:** 3.25pm

**Please note that Nursery times vary**

Regular attendance at school is vital if children are to make good progress and to benefit from all the opportunities that school offers. Good attendance and punctuality is important. If your child has been absent from school the law requires you to notify the school of the reason for absence.

As a guide, children should only be absent if they are ill or attending a medical appointment. Children should not be kept from school to help at home, because the family has a new pet or to go shopping. We are not allowed to authorise absence for birthdays or personal events. If in doubt, please ask as unauthorised absences are classed as truancy and will be investigated.



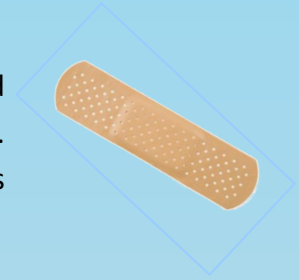
## Holidays

Children are expected to be in school for 190 days during the school year. This leaves 175 days for holidays, treats, special events and non-urgent appointments. We are unable to authorise time off for holidays in term time, except in exceptional circumstances. If you need to make an application for leave in term time, a form is available from the office which must be completed.

# Health Matters

## First Aiders

At Catshill First School and Nursery, there are several staff who are trained in First Aid and are able to support a child who requires basic treatment. We have a medical room and an accessible toilet for pupils with conditions requiring more support.



## Medicines

Generally a sick child should be kept at home. Medicines, such as antibiotics can usually be given before and after school. Where this is not really possible, or where there is an on going or chronic condition the school is happy to offer help. Medication should be handed in at the office and a medication form completed.



Only medicines prescribed by a doctor that has the dispensing pharmacists label with the child's name and dosage upon it can be given in school. Only a qualified First Aider will administer medicine. We reserve the right to ask parents to come into school to administer the medicine themselves. Children with asthma keep their inhalers in their classroom. All inhalers must be in date and should be labelled with the child's name.

## Long Term Medical Needs

If your child has any allergies or needs additional medical support, we will work with you to produce an individual care plan. Please discuss any specific needs with us.





# Safety and Welfare

The safety and welfare of our pupils and their families is of utmost importance to us at Catshill First School and Nursery.

We work in partnership with external agencies to ensure that each child's needs are met and that positive outcomes are achieved. We can provide help and support for a range of needs. Our Children and Family Welfare Support Lead is Pauline Wainman.

Links to other agencies as well as support and guidance for families can be found on our website.



## Child Protection

Every school is legally obliged to follow a set procedure if we are concerned about a child's safety or welfare. Head Teachers are required to refer their concerns to the Social Care Department of Social Services for further investigation so that children at risk can be quickly identified.

We have a duty of care to protect and safeguard the children at our school. We follow the Worcestershire Safeguarding Procedures. All adults in school are subject to Enhanced CRB checks whether they are employees or volunteers. The school's designated teacher for child protection is Ms Doidge. She is supported by Mrs Plant, Ms Shingler and Mrs Wainman. The school does not investigate the concerns or make decisions about whether or not a child is being abused.

We work in partnership with all agencies to ensure that children are safe and can provide help and support if you are struggling in any way. If your child has a named Social Worker please let us know.

*'Leaders ensure there is a strong culture of keeping pupils safe. The support for vulnerable pupils is strong.'*  
Ofsted 2022

# Term Dates

Academic Year  
2025 - 2026

## AUTUMN TERM 2025

TERM STARTS	Tuesday 2 September 2025 New Reception groups and selected pupils for appointments and visits
	Wednesday 3 September 2025 Whole school return
HALF TERM	Monday 27 October – Friday 31 October 2025
TERM ENDS	Friday 19 December 2025

SCHOOL CLOSED TO PUPILS

Inset 1 – Monday 1 September 2025

Inset 2 – Monday 3 November 2025

## SPRING TERM 2026

TERM STARTS	Tuesday 6 January 2026
HALF TERM	Monday 16 February – Friday 20 February 2026
TERM ENDS	Friday 27 March 2026

SCHOOL CLOSED TO PUPILS

Inset 3 – Monday 5 January 2026

## SUMMER TERM 2026

TERM STARTS	Tuesday 14 April 2026
HALF TERM	Monday 25 May – Friday 29 May 2026
TERM ENDS	Friday 17 July 2026

SCHOOL CLOSED TO PUPILS

Inset 4 – Monday 13 April 2026

Bank Holiday – Monday 4 May 2026

Inset 5 – Monday 20 July 2026

Reporting  
Absence

We continually strive to improve attendance for the pupils in our school as good attendance is linked to future success. In any case of absence, it is a parent or guardian's legal duty to notify school of the reason why. We have increased the number of ways that you can get in touch with us to report a child's absence:

Our answering service.

This bypasses reception and enables you to leave a direct message, 24 hours a day, on the answerphone informing us of the absence. The number to call is **01527 872913**, option 1 or option 2 to speak to a member of staff.

Email on [office@catshillfirst.worcs.sch.uk](mailto:office@catshillfirst.worcs.sch.uk)

**Epraise Admin**

By calling into the **school office** to speak to a member of staff.

**All absences must be reported by one of the methods above by 9.15am.**

The information we need is your name, your child's name, your child's class and the reason for their absence.

We may still contact you for further information.

Many thanks for your support in this matter.