

Key Knowledge

Teeth

They are made up of incisors, canines, premolars and molars which bite, tear and chew our food

Digestive system

These are the parts of your body which help to break down the food you eat so that your body has the nutrients it needs to grow and stay healthy

Stomach

This is where your food is made into a paste called chyme by the acids there

Intestine

You have a small and large intestine where nutrients and water are taken from the food you have eaten

Nutrients

These are the important bits in our food which keep us growing and healthy

Important Scientists

Ivan Pavlov

He was a scientist who worked out how animals respond to signals and linked this to eating food

1849 - 1936

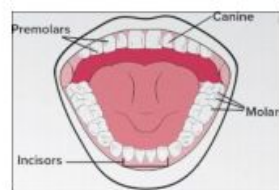
Gerty Cori

She won a Nobel prize for working out how our body deals with sugars and how this is linked to patients with Diabetes

1896 - 1957

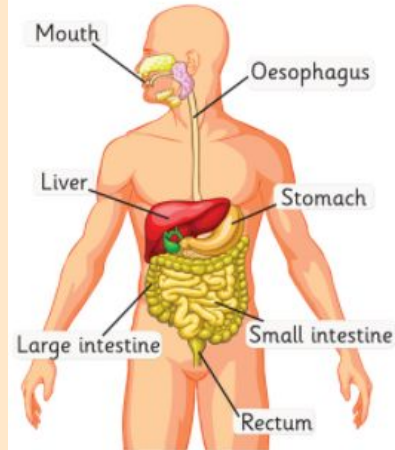
Key Diagrams

Mouth



- **Canines** are pointed for tearing and ripping food - these are usually used when chewing meat.
- **Incisors** are shovel shaped and help bite lumps out of and cutting food.
- **Premolars** and **molars** are flat and they grind and crush food.

The digestive system



Investigate

Research what the different parts of the digestive system do

Create a model of the digestive system using different household objects

Explore which different teeth are used for cutting, tearing and chewing or grinding food

Use food chains to identify producers, predators and prey within a habitat

Use secondary sources to identify animals in a habitat and find out what they eat

Classify animals as herbivores, carnivores or omnivores according to the type of teeth they have in their skulls

Key Vocabulary

anus	The part of our body where poo comes out from when we get rid of it in the toilet
carnivore	An animal which eats meat
digestion	What our body does to break down food we have eaten into the nutrients we need to stay healthy
food chain	Living things which are linked to each other because each one feeds on the one next to it
herbivore	An animal which eats plants
mouth	The part of your body which contains your teeth and where digestion starts
omnivore	An animal which eats both meat and plants
producer	Living things which make their own food using energy from the sun such as plants
predator	.An animal which kills and eats other animals
prey	An animal which hunts and captures another animal for food
rectum	The part of our body where poo is stored before we get rid of it in the toilet
saliva	The liquid produced in our mouths which starts to digest our food when we chew it